



NETRON

2026
PRODUCT GUIDE

NETRON

ENGINEERED FOR THE ELITE

NETRON is a comprehensive data distribution range of rugged, reliable and easy-to-configure devices, offering affordable, smart solutions for the professional lighting and AV markets.

NETRON devices support applications from live production and venue installations to architectural environments with IP65 options available for secure all-weather protection.

Our products are developed with the user in mind, combining tough hardware with smart software, for fast setup and solid performance.

- Simple and efficient configuration via the on-board web interface or device OLED display
- Instant Plug & Play through the interactive presets for recall of NETRON or user configurations
- Device start and signal loss logic ensures your venue is never in the dark
- Advanced Cue Engine for standalone or backup operation
- Remote Input Triggers for external control

NETRON is built to withstand the day in and day out rigors of on-the-road or venue.

The scratch-resistant powder coating is rated for hurricane force winds and constant exposure to the elements. We chose this thermally fused finish for superior protection and to ensure that NETRON devices look their best across many years of service.

Precision-milled aluminum chassis give NETRON devices incredible strength while being lightweight and extremely impact resistant.

Obsidian



INDEX

Network Switches 04

FS16	07
NS8	08
NS8 IP	09

ETHERDMX Nodes 10

EP1 / EP1D	12
EP2	13
EP4 / EN4	14
EN6D	15
EN6 IP	16
DA2410V	17
RDM10 Hybrid	18
EN12	19
EN12i	20

Data Splitters 22

RDM6XL / RDM645	24
RDM6 IP	25
RDM6D	26
DMX10-3 / DMX10-5	27
DMX10-53	28
RP2	29
Accessories	30

FS16



NS8



NETWORK SWITCHES

NS8 IP



NETRON Network Switches deliver exceptional performance and durability, engineered to unify lighting networks seamlessly. These managed switches provide robust Ethernet integration and high-speed communication, ideal for complex installations. Preconfigured for direct connection to lighting consoles, they also support full customization for diverse IP setups.

Key features include VLAN capabilities for secure traffic segmentation and PoE outputs to power devices such as EtherDMX nodes. Built for the rigors of touring, the hardware includes Gigabit locking RJ45 ports, locking power in/thru, and optional rackmount accessories—making NETRON switches an essential tool for any production or event.



TM

REFINED BY PASSION

Obsidian Control Systems combines over 30 years of experience developing professional entertainment lighting control solutions for automated and theatrical lighting fixtures.

ONYX

The lighting control software engine that powers the entire system. The ONYX platform scales from simple setup to complex touring shows with ease. Multiple hardware choices from USB wings to powerful consoles allows users to select the best surface for the budget and application. One simple platform, no simplistic feature-limited editions. ONYX is designed to grow with the user and shows, offering smart options and affordable solutions along the way.

DYLOS

The advanced pixel composer and media engine powering ONYX. Create the most powerful FX with remarkable ease. Access hundreds of variations of any media file or effect. DYLOS gives the operator a full media engine without limitations. Fully integrated in the workflow of ONYX. DYLOS truly breaks new ground in combining a traditional lighting console with an advanced media engine in a totally integrated system.

FRONT



BACK



FS16

The NETRON FS16 is a powerful rackmount network switch featuring 12 Gigabit ports, 4x Fiber ports (1x 10G in the front and 3x 1.25G in the rear) and PoE+ support. With a total POE power budget of 180W the FS16 is ideally suited to distribute data and power to NETRON nodes or any other PoE+ compatible network appliance. Highly optimized for processing the high data volume found in today's ever-growing lighting systems, the NETRON FS16 distributes a variety of entertainment protocols without delay, ensuring instant reaction times and flawless execution.

Key Features

- Gigabit and SFP Network Switch optimized for data intensive entertainment application
- 12 Gigabit Copper Ports
- 4 Internal SFPs, preconfigured with 1x 10 Gbps and 3x 1.25 Gbps MMF, 850nm, 300m
- 4 SEETRONIC Duplex Fiber ports (S02DF, D-Size) preinstalled
- Artnet and sACN support
- X-Net, HogNet, MA-Net, ETC Net3 and various other protocols
- Factory and user presets for plug and play setups
- Preset Recall for Network Selection, Setting and Routings
- PoE and PoE+ support
- PoE power switch
- OLED display for direct feature adjustments
- Remote configuration via internal webpage
- Convection cooled design
- Powder-coated aluminum 1U rack housing

Connections

Front

- (8) Locking RJ45 Ethernet network connections
- (1) SEETRONIC SO2DF (LC and DUO compatible), 10 Gbps
- LED Feedback for Activity, Link, POE, VLAN
- Full color OLED display
- Encoder w. Push to Select / Exit Button
- (4) Network Selector / Preset Recall Buttons

Back

- IP65 Locking Power In/Thru
- (4) Locking RJ45 Ethernet network connections
- (3) SEETRONIC SO2DF (LC and DUO compatible), 1.25 Gbps
- RJ45 Remote Port for optional Button Station
- LED Feedback for Activity, PoE, VLAN
- PoE Power Switch
- Reset Button

Support

- sACN, Art-Net
- ONYX X-Net, MANet2, MA-Net3, HogNet, ETC Net3
- Dante
- Broadcast, Unicast, Multicast

Ethernet Features

- Gigabit RJ45
- 10G and 1.25G Duplex LC, Multi Mode Fiber (MMF), 850nm, 300m
- PoE (15W), PoE+ (30W), Max power per port setting
- IGMP Querier, IGMP Snooping
- VLAN (6 Groups, Trunk, Color Coding)
- DHCP Server per VLAN
- Dante compliant QoS Preset
- Total Switching Capacity: 28Gbps

Physical

- Length: 165.8 mm (6.5 in.)
- Width: 482.5 mm (19 in.)
- Height: 44 mm (1.7 in.)
- Weight: 2.8 kg (6.2 lbs.)

Electrical

- POE 802.3at (max 30W per port)
- 100-240 V nominal, 50/60 Hz,
- 200W Max Power Consumption
- PoE, PoE+

FRONT



BOTTOM



BACK



PLATES



NS8

The NETRON NS8 is a compact network switch featuring 8 Gigabit ports and PoE+ support. With a total power budget of 100W the NS8 is ideally suited to distribute data and power to NETRON nodes or any other PoE compatible network appliance. Highly optimized for processing the high data volume found in today's ever-growing lighting systems, the NETRON NS8 distributes a variety of entertainment protocols without delay, ensuring instant reaction times and flawless execution.

Key Features

- Gigabit Network Switch optimized for data intensive entertainment applications
- Art-Net and sACN support
- X-Net, HogNet, MA-Net, ETC Net3 and various other protocols
- Factory and user presets for plug and play setups
- PoE and PoE+ support
- PoE power switch
- Remote configuration via internal webpage
- Convection cooled design
- Powder-coated aluminum 1/2 rack housing

Mounting

- Standalone
- Truss-mount (M10 or M12 mounting hole)
- Wall-mount horizontal or vertical (included)
- DIN Rail horizontal or vertical (included)
- 1/2 Rack-mount option (requires NET Shelf)

Connections

Front

- (6) Locking RJ45 Ethernet network connections
- LED Feedback for Activity, Link, POE, VLAN

Back

- Locking Power In/Thru
- (2) Locking RJ45 Ethernet network connections
- LED Feedback for Activity, Link, POE, VLAN
- POE Power Switch

Physical

- Length: 147 mm (5.8 in.)
- Width: 215 mm (8.5 in.)
- Height: 42 mm (1.65 in.)
- Weight: 1.1 kg (2.2 lbs)

Electrical

- 100-240 V nominal, 50/60 Hz, 109W
- PoE, PoE+
- 100W Total PoE Budget

FRONT



BACK



SIDES



NS8 IP

The NETRON NS8 IP is a rugged, IP66-rated outdoor network switch with eight Gigabit ports and PoE+ support. With a 100w power budget, it's ideal for distributing data and power to NETRON nodes or other PoE-compatible devices. Optimized for high data loads in modern lighting systems, the NS8 IP delivers multiple entertainment protocols with zero delay for fast, reliable performance.

Key Features

- Rugged IP66 chassis
- Gigabit network switch optimized for data-intensive entertainment networks
- Art-Net and sACN support
- X-Net, HogNet, MA-Net, ETC Net3 and various other protocols
- Factory and user presets for plug and play setups
- PoE+ support
- PoE power switch
- Remote configuration via internal webpage
- Convection cooled design
- Powder-coated aluminum exterior housing

Mounting

- Standalone
- Truss-mount (M12 mounting hole)
- Wall-mount horizontal or vertical (included)

Connections

Sides

- (8) Locking RJ45 Ethernet network connections
- LED Feedback for Activity, Link, POE, VLAN
- IP 66 Locking Power In/Thru
- PoE Power Switch, Reset Switch

Physical

- Length: 242 mm (9.5 in.)
- Width: 179 mm (7.1 in.)
- Height: 82.3 mm (4.24 in.)
- Weight: 2.1 kg (4.6 lbs)

Electrical

- 100-240 V nominal, 50/60 Hz, 109W
- PoE, PoE+
- 100W Total PoE Budget



IP66 CHASSIS

EP1



EP1D



EP2



EP4



EN4



EN6D



EN6 IP



DA2410V



ETHERDMX NODES

RDM10



EN12



EN12I



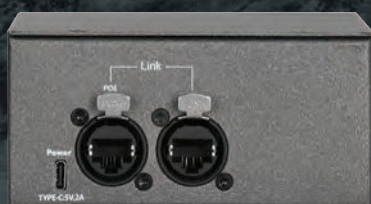
NETRON EtherDMX Nodes—also known as EtherDMX Gateways or sACN/Art-Net Nodes—introduce advanced tools for unifying lighting network protocols. Engineered to seamlessly merge Ethernet and DMX, they ensure high-speed, reliable communication across any lighting setup.

Featuring modern hardware with locking power in/thru and RJ45 in/thru connections with PoE support, NETRON Nodes deliver both durability and flexibility. Software features such as IP web configuration, CLU management, ONYX Nova licensing, and built-in cue storage and playback provide comprehensive control for any lighting application.

EP1 FRONT



EP1 BACK



EP1 SIDE



EP1D FRONT



EP1D TOP



EP1D BOTTOM



EP1 / EP1D

The NETRON EP1 and EP1D are compact Ethernet to DMX gateways with a single RDM compatible port. The EP1 is designed for single gang wall mount, truss mount, and standalone installations, whereas the EP1D can be DIN-rail mounted. They are configurable via a web browser or the NETRON CLU web remote software. The EP1 features an integrated OLED display and encoder. Both are powered over Ethernet or via the convenient USB-C connection as well as feature the ONYX NOVA 4-Universe license.

Key Features

EP1 + EP1D

- RDM, Art-Net and sACN support
- Factory and user presets for plug and play setup
- Remote configuration via internal webpage
- Remote configuration via NETRON CLU software

EP1

- 1.3" OLED Display with rotary knob
- Powder-coated compact metal housing
- Included Decora faceplate

Mounting

EP1

- Standalone (backbox included)
- Truss-mount (M10 + M12 mounting hole)
- In-wall 1-Gang (US) or 50 mm round (EU)

EP1D

- Din Rail Mount

Connections

EP1 Front

- (1) 5pin DMX/RDM optically isolated port
- Bidirectional for DMX In and Output

EP1 Side

- Locking RJ45 Gigabit Ethernet (1xPOE)
- USB-C power option (5V, 2A)

EP1D Front

- USB-C Temporary Power (5V/2A)

EP1D Top

- RJ45 Gigabit Ethernet (POE)
- DC 9-48V In (2pin Terminal Block)

EP1D Bottom

- 3pin Phoenix Terminal Block DMX/RDM optically isolated port
- Bidirectional DMX In / Out

Physical

EP1

- Length: 90 mm (2.3 in.)
- Width: 55 mm (2.2 in.)
- Height: 114 mm (4.5 in.)
- Weight: 0.7 kg (1.54 lbs)

EP1D

- Length: 87 mm (3.4 in.)
- Width: 36 mm (1.4 in.)
- Height: 60 mm (2.4 in.)
- Weight: 0.2 kg (0.44 lbs.)

Electrical

EP1

- USB-C 5V
- PoE 802.3af
- Power Consumption: 2.8W

EP1D

- USB-C (5V/2A), DC 9-48V
- PoE 802.3af
- Power Consumption 1.6W

FRONT



SIDE



EP2

The NETRON EP2 is a compact Ethernet to DMX gateway with two RDM compatible ports designed for wall mount, truss mount and standalone installations. It is configurable via its internal web remote and powered over Ethernet or via the convenient USB-C connection.

Key Features

- RDM, Art-Net and sACN support
- Factory and user presets for plug and play setups
- POE or USB-C powered
- 1.3" OLED Display with rotary knob
- Remote configuration via internal webpage
- Powder-coated compact metal housing
- Connect to ONYX PC for a full four Universe Solution
- In-wall, On-Wall, Truss and Standalone mounting
- Unlocks ONYX NOVA 4-Universe License*
- NETRON CLU for remote configuration and firmware updates

Mounting

- Standalone (backbox included)
- Truss-mount (M10 + M12 mounting hole)
- In-wall 1-Gang (US) or 50 mm round (EU)

Connections

Front

- (2) 5pin DMX/RDM optically isolated ports
- Ports are bidirectional for DMX In and Output

Side

- (1) Locking RJ45 Ethernet network connections (POE)
- USB-C power option (5V, 2A)

Physical

- Length: 117.6 mm (4.6 in.)
- Width: 114.0 mm (4.5 in.)
- Height: 89.1 mm (3.5 in.)
- Weight: 0.8 kg (1.76 lbs.)

Electrical

- USB-C 5V
- POE 802.3af
- Power Consumption: 2.8W

EP4 FRONT



EN4 FRONT



EP4 BACK



EN4 BACK



EP4 / EN4

The NETRON EP4 is a compact Ethernet to DMX gateway with four RDM compatible ports. It is configurable via its internal web remote and powered over Ethernet or via the USB-C connection. The NETRON EN4 is a powerful Ethernet to DMX gateway with four RDM compatible ports. Designed for live production and installations with a rugged housing and high-performance processing it offers flexible mounting options to cover any situation.

Key Features

- RDM, Art-Net and sACN support
- Factory and user presets for plug and play setups
- POE or USB-C powered
- 99 Internal cues with fade and delay time
- Remote configuration via internal webpage
- Powder-coated compact aluminum housing
- Unlocks ONYX NOVA 4-Universe License*
- NETRON CLU for remote configuration and firmware updates

Mounting

- Standalone
- Truss-mount (M10 + M12 mounting hole)
- Wall-mount horizontal or vertical (Included)
- DIN Rail horizontal or vertical (included)
- Rack-mount option (requires NET Shelf) (EN4)

Connections

EP4 Front

- (4) 5pin DMX/RDM optically isolated ports
- Bidirectional ports for DMX In and Output

EP4 Back

- USB-C power option (5V, 2A)
- (2) Locking RJ45 Ethernet ports (1x PoE)

EN4 Front

- (4) 5pin DMX/RDM optically isolated ports
- Full color OLED display
- Encoder w. Push to Select / Exit Button
- Bidirectional ports for DMX In and Output

EN4 Back

- Locking Power In/Thru
- (2) Locking RJ45 Ethernet ports (1x PoE)

Physical

EP4

- Length: 133.5 mm (5.3 in.)
- Width: 118 mm (4.6 in.)
- Height: 42 mm (1.65 in.)
- Weight: 0.5 kg (1.1 lbs.)

EN4

- Length: 215 mm (8.5 in.)
- Width: 139 mm (5.5 in.)
- Height: 42 mm (1.65 in.)
- Weight: 1 kg (2.26 lbs.)

Electrical

EP4

- POE 802.3af
- Power Consumption 3.8W
- USB-C 5V

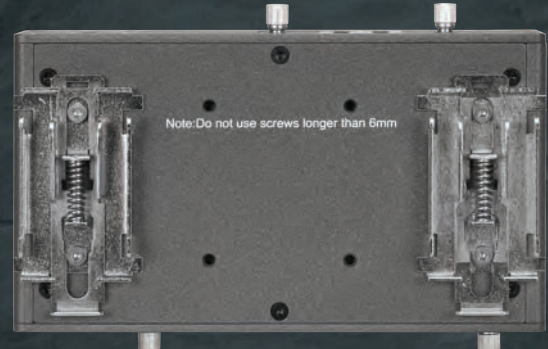
EN4

- POE 802.3af
- Power Consumption 5W
- 100-240 V nominal, 50/60 Hz, 10W

FRONT



BACK



TOP



EN6D

The NETRON EN6D is a compact, powerful Ethernet-to-DMX gateway with six RDM-compatible outputs, available via wire terminals or RJ45. Easy to configure with built-in presets and advanced merge and routing options, it's ideal for permanent installations needing flexible wiring. Its innovative design supports RJ45, screw-terminal, or IDC connector configurations.

Key Features

- Emergency Cue System with test button and contact closure
- RJ45, screw terminal or IDC connectivity
- Configurable Top, Bottom and Front ports
- RDM, Art-Net and sACN support
- Factory and user presets for plug and play setup
- POE or 9-48V DC power
- 1.3" OLED Display with rotary knob
- 99 Internal cues with fade and delay time
- Remote configuration via internal webpage
- Powder-coated aluminum DIN Rail housing
- Unlocks ONYX NOVA 4-Universe License*

Mounting

- DIN Rail
- Wall-mount

Connections

Front

- Full color 1.3" OLED display
- Encoder w. Push to Select / Exit Button
- 6-port DMX connection plate (RJ45 or Terminal Block) or Cover Plate
- (2) RJ45 Gigabit Ethernet (1x POE) or Cover Plate

Bottom

- 6-port DMX connection plate (RJ45 or Terminal Block) or Cover Plate
- Emergency Contact (3pin Terminal Block, Dry Contact or 12V)

Top

- (2) RJ45 Gigabit Ethernet (1x POE) or Cover Plate
- DC In (2pin Terminal Block)
- USB-C (5V/2A)

Physical

- Length: 116 mm (4.7 in.)
- Width: 143 mm (5.6 in.)
- Height: 52 mm (2.1 in.)

Electrical

- USB-C 5V
- POE 802.3af
- DC 9-48V



EN6 IP

The NETRON EN6 IP is a powerful Ethernet to DMX gateway with six RDM compatible ports in a rugged IP66 rated chassis. It is designed for live productions, movie sets, temporary outdoor installations, or interior use with long term protection from humidity, dust and debris. The EN6 IP unlocks the four Universe ONYX NOVA Edition.

Key Features

- IP66 Ethernet to DMX Gateway
- RDM, Art-Net and sACN support
- Factory and user presets for plug and play setups
- Line Voltage or POE powered
- 1.8" OLED Display and waterproof touch buttons
- 99 Internal cues with fade and delay time
- Remote configuration via internal webpage
- Powder-coated aluminum chassis
- Unlocks ONYX NOVA 4-Universe License*

Mounting

- Standalone
- Truss-mount (M10 or M12)
- Wall-mount

Connections

Bottom

- Locking IP66 Power In/Thru

Side

- (2) Locking IP65 RJ45 Ethernet network connections (1x POE)
- (6) 5pin IP66 DMX/RDM optically isolated ports
- Ports are bidirectional for DMX In and Output

Physical

- Length: 204 mm
- Width: 179 mm
- Height: 61 mm
- Weight: 2.0 kg

Electrical

- 100-240V nominal, 50/60 Hz
- POE 802.3af
- Power Consumption: 6W

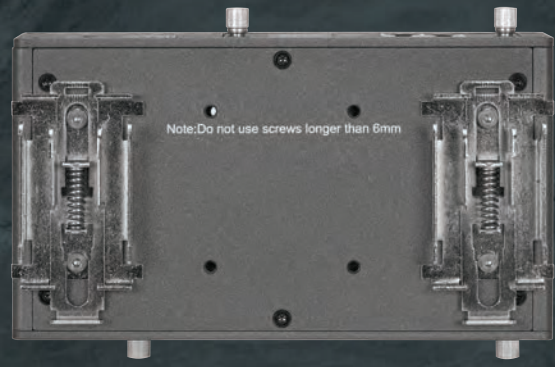


IP66 CHASSIS

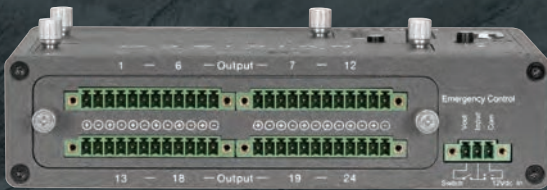
FRONT



BACK



BOTTOM



DA2410V

The NETRON DA2410V is a compact DIN Rail or Wall Mount Ethernet/DMX gateway with (24) 0–10 V analog outputs. Easily configured via its OLED display, it supports DMX, Art-Net, or sACN sources. Flexible connector options—screw-terminal or IDC—are included through interchangeable plates that can be mounted on the top, bottom, or front to suit any installation.

Key Features

- (24) 0–10V 40mA Sink Outputs
- Screw terminal or IDC connectivity
- Configurable Top, Bottom and Front ports
- DMX, RDM, Art-Net and sACN support
- Factory and user presets for plug and play setup
- 1.3" OLED Display with rotary knob
- 99 Internal cues with fade and delay time
- Emergency Cue System with test button and contact closure
- Remote configuration via internal webpage
- Powder-coated aluminum DIN Rail housing
- Unlocks the four Universe ONYX NOVA Edition*

Mounting

- DIN Rail
- Wall-mount

Connections

Front

- Full color 1.3" OLED display
- Encoder w. Push to Select / Exit Button
- 24-port Analog connection (Terminal Block) or Cover Plate
- (2) RJ45 Gigabit Ethernet (1x POE) + DMX In/Out or Cover Plate

Bottom

- 24-port Analog connection (Terminal Block) or Cover Plate
- Emergency Contact (3pin Terminal Block, Dry Contact or 12V)

Top

- (2) RJ45 Gigabit Ethernet (1x POE) + DMX In/Out or Cover Plate
- DC In (2pin Terminal Block)

Physical

- Length: 116 mm (4.7 in.)
- Width: 143 mm (5.6 in.)
- Height: 52 mm (2.1 in.)

Electrical

- DC 12–48V

FRONT



BACK



RDM10 HYBRID

The NETRON RDM 10 is a first of its kind hybrid splitter. Dual DMX input, 10 port RDM Splitter, Merger and EtherDMX Gateway are unified into the RDM10, with an advanced feature set to cover a wide variety of applications. 99 internal cues, factory and user presets plus external contact closures provide a unique combination of multiple devices to solve many required tasks in one powerful unit.

Key Features

- 10 assignable DMX outputs
- Integrated 2 Universe Art-Net/sACN node
- Configurable DMX refresh rate
- Dual DMX Inputs for backup and signal loss options
- Remote configuration via internal webpage
- 1.8" OLED Display with rotary knob
- 99 Internal cues with fade and delay time
- Contact closures for cue or preset recall
- Powder-coated aluminum rackmount housing
- Unlocks ONYX NOVA 4 Universe License*
- NETRON CLU for remote configuration and firmware updates

Mounting

- Rackmount

Connections

Front

- (2) 5pin DMX Input
- (10) 5pin Opto-Isolated DMX Outputs
- Full color OLED display
- Encoder w. Push to Select / Exit Button

Back

- (2) 5pin DMX Input (parallel with front)
- (2) 5pin DMX Through
- (2) Locking RJ45 Ethernet Network In
- (10) Contact Closures (Terminal Block)
- Locking Power In/Thru

Physical

- Length: 482.5 mm (19 in.)
- Width: 146 mm (5.7 in.)
- Height: 44 mm (1.7 in.)
- Weight: 1.82 kg (4 lbs)

Electrical

- 100-240 V nominal, 50/60 Hz, 10W
- POE 802.3af
- Power Consumption: 10W

FRONT



BACK



EN12

The NETRON EN12 is a powerful high-density Ethernet to DMX gateway with twelve RDM compatible ports. Easy to configure with a range of integrated presets plus a wide array of advanced merge and routing features it is the ideal device for live production or installations requiring a lot of physical DMX ports. Contact closures allow for recall of presets, routings, mergers or any of the internal cues.

Key Features

- RDM, Art-Net and sACN support
- Factory and user presets for plug and play setups
- Line Voltage or POE powered
- 1.8" OLED Display with rotary knob
- 99 Internal cues with fade and delay time
- Customizable routing and merging options
- Remote configuration via internal webpage
- Contact closures for cue or preset recall
- Powder-coated aluminum rackmount housing
- Unlocks ONYX NOVA 4 Universe License*
- NETRON CLU for remote configuration and firmware updates

Mounting

- Rackmount

Connections

Front

- (12) 5pin DMX/RDM optically isolated ports

Back

- (2) Locking RJ45 Ethernet network In
- 10x Contact Closures (Terminal Block)
- Locking Power In/Thru

Physical

- Length: 482.5 mm (19 in.)
- Width: 146 mm (5.7 in.)
- Height: 44 mm (1.7 in.)
- Weight: 1.82 kg (4 lbs.)

Electrical

- 100-240 V nominal, 50/60 Hz
- POE 802.3af
- Power Consumption 9W

FRONT



BACK



EN12i

The NETRON EN12i is a powerful high-density Art-Net and sACN to DMX gateway with twelve RDM compatible wire terminal or RJ45 outputs. Easy to configure with a range of integrated presets plus a wide array of advanced merge and routing features it is the ideal device for permanent installations requiring a lot of physical DMX ports. Analog contact closures or an optional remote button station allow for recall of presets, routings, mergers or any of the internal cues.

Key Features

- RJ45, screw terminal or IDC connectivity
- Back facing wiring plates for permanent rack installation
- Convenience Network and DMX port on front plate
- RDM, Art-Net and sACN support
- Factory and user presets for plug and play setups
- Line Voltage or POE powered
- 1.8" OLED Display with rotary knob
- 99 Internal cues with fade and delay time
- Customizable routing and merging options
- Remote configuration via internal webpage
- Powder-coated aluminum rackmount housing
- Contact closures and Remote Button Station (optional) for cue or preset recall
- Unlocks ONYX NOVA 4 Universe License*

Mounting

- Rackmount

Connections

Front

- (1) 5-pin XLR DMX/RDM port (optically isolated, bidirectional)
- (1) Locking RJ45 Gigabit Ethernet
- Full color OLED display
- LED Status feedback array
- Encoder w. Push to Select / Exit Button

Back

- (2) RJ45 Gigabit Ethernet
- (2) 6 DMX connection plates (RJ45 or Terminal Block)
- Bidirectional for DMX In or Output
- (10) Contact Closures (Terminal Block)
- Locking Power In/Thru

Physical

- Length: 482.5 mm (19 in.)
- Width: 146 mm (5.7 in.)
- Height: 44 mm (1.7 in.)
- Weight: 1.82 kg (4 lbs)
-

Electrical

- 100-240 V nominal, 50/60 Hz
- POE 802.3af
- Power Consumption: 9W

0351
CONTROL SYSTEMS

0351
CONTROL S

0351
CONTROL SYSTEMS

0351
NX
SYNCH

RDM6XL / RDM645



RDM6 IP



RDM6D



DATA SPLITTERS

DMX10-53



DMX10-3 / DMX10-5



NETRON data splitters are meticulously designed to offer unparalleled versatility and longevity, incorporating opto-isolated circuitry that ensure a robust and uninterrupted data transmission. Some splitters are specifically engineered to support RDM functionality, enabling seamless remote monitoring and configuration of DMX devices.

With NETRON RDM Splitters, users can efficiently manage their lighting network with ease and precision, while DMX splitters provide a cost-effective means to split and protect DMX data efficiently.

RDM6XL FRONT



RDM645 FRONT



RDM6XL BACK



RDM645 BACK



RDM6XL / RDM645

The NETRON RDM6XL and NETRON RDM645 are rugged and compact DMX/RDM Splitters. Designed for live production and installations, feature six opto-isolated 5pin XLR outputs (RDM6XL) or six locking opto-isolated RJ45 DMX outputs (RDM645) and flexible mounting options to cover any situation.

Key Features

- (6) XLR 5pin outputs (RDM6XL)
- (6) locking RJ45 Ethernet DMX outputs (RDM645)
- DMX and RDM compliant
- Optically isolated ports
- Power / DMX Through connectors
- Powder-coated aluminum 1/2 rack housing

Mounting

- Standalone
- Truss-mount (M10 or M12 mounting hole)
- Wall-mount horizontal or vertical (included)
- DIN Rail horizontal or vertical (included)
- Rack-mount option (requires NET Shelf)

Connections

- RDM6XL Front**
- 5pin DMX Input
 - (6) 5pin Opto-Isolated DMX Outputs
 - RDM Enable

RDM6XL Back

- 5pin DMX Input (parallel with front)
- 5pin DMX Through
- Terminate
- Locking Power In/Thru

RDM645 Front

- Locking RJ45 Ethernet DMX Input
- (6) Locking RJ45 Ethernet Opto-Isolated DMX Outputs
- RDM Enable

RDM645 Back

- Locking RJ45 Ethernet DMX Input (parallel with front)
- Locking RJ45 Ethernet DMX Through
- Terminate
- Locking Power In/Thru

Physical

- Length: 215 mm (8.5 in.)
- Width: 139 mm (5.5 in.)
- Height: 42 mm (1.65 in.)
- Weight: 1 kg (2.2 lbs)

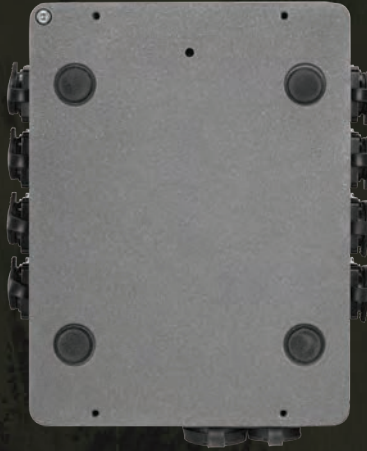
Electrical

- 100-240 V nominal, 50/60 Hz, 10W

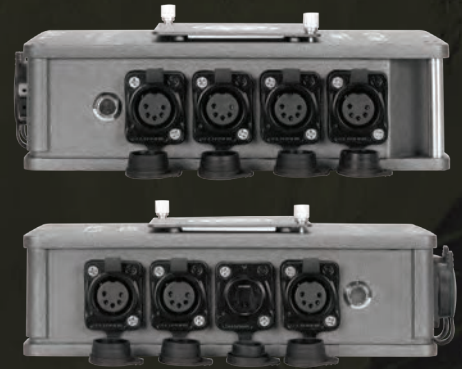
FRONT



BACK



SIDES



RDM6 IP

The NETRON RDM6 IP is a six-port DMX/RDM splitter in a rugged IP66-rated chassis. It is designed for live productions, movie sets, temporary outdoor installations, or interior use with long term protection from humidity, dust and debris.

Key Features

- IP66 Chassis
- (6) XLR 5pin outputs
- DMX and RDM compliant
- Optically isolated ports
- Power / DMX Through connectors
- Powder-coated aluminum housing

Mounting

- Standalone
- Truss-mount (M10 or M12)
- Wall-mount

Connections

Front

- LED Port Feedback

Sides

- (1) 5pin IP66 DMX In
- (1) 5pin IP66 DMX Thru
- (6) 5pin IP66 DMX/RDM optically isolated ports
- DMX Termination Button
- RDM Enable / Disable Button

Bottom

- Locking IP66 Power In/Thru

Physical

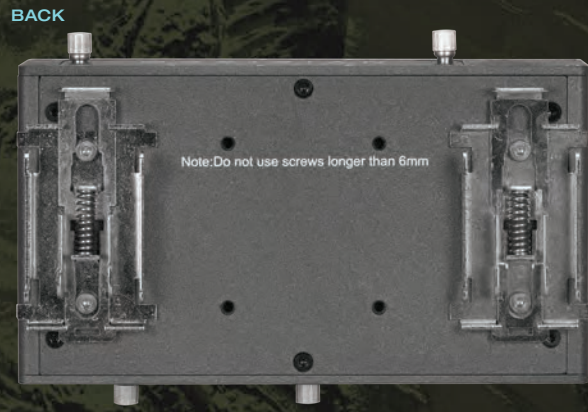
- Length: 242 mm (9.5 in.)
- Width: 183 mm (7.2 in.)
- Height: 82 mm (3.2 in.)
- Weight: 2 kg (4.41 lbs)

Electrical

- 100-240 V nominal, 50/60 Hz, 5W



IP66 CHASSIS



RDM6D

The NETRON RDM6D is 6-port RDM Splitter in a smart form factor optimized for system integrators and fixed installations. It features a rugged chassis and interchangeable connection plates for ultimate performance and flexibility. It can be DIN-Rail or wall mounted and provides Terminal, IDC (Insulation Displacement Connector) and RJ45 DMX options all included. Data ports can be repositioned to the top, bottom or front of the device, accommodating various wiring and mounting requirements.

Key Features

- RJ45, screw terminal or IDC connectivity
- Configurable Top, Bottom and Front ports
- DMX, RDM support
- POE or 9-48V DC power
- Powder-coated aluminum DIN Rail housing

Mounting

- DIN Rail
- Wall-mount

Connections

Front

- 6-port DMX connection plate (RJ45 or Terminal Block) or Cover Plate
- 2-port DMX In / Thru connection plate (RJ45 or Terminal Block) or Cover Plate

Bottom

- 6-port DMX connection plate (RJ45 or Terminal Block) or Cover Plate
- Emergency Contact (3pin Terminal Block, Dry Contact or 12V)

Top

- 2-port DMX In / Thru connection plate (RJ45 or Terminal Block) or Cover Plate
- DC In (2pin Terminal Block)
- USB-C (5V/2A)

Physical

- Length: 116 mm (4.7 in.)
- Width: 143 mm (5.6 in.)
- Height: 52 mm (2.1 in.)

Electrical

- DC 9-48V
- USB-C (5V/2A)

DMX10-5 FRONT



DMX10-3 FRONT



BACK



*DMX10-3 only available in EU

DMX10-3 / DMX10-5

The NETRON DMX10 is a rackmount 10-port DMX splitter with dual inputs and freely assignable 3-pin or 5-pin XLR outputs. Each port can be routed to Input A or B via durable toggle switches for maximum flexibility. Housed in a rugged, lightweight metal chassis with impact-resistant finish, the DMX10 is ideal for installations and touring applications that don't require RDM communication.

Key Features

- Industrial strength powder-coated finish
- Lightweight and rugged rackmount housing
- Dual A/B XLR DMX Input
- (10) Isolated XLR DMX Outputs
- A/B routing per output port
- LED feedback for In/Out/A/B/Power

Mounting

- Rackmount

Connections

DMX10-3 Front

- (2) 3pin DMX Input
- (10) 3pin Opto-Isolated DMX Outputs

DMX10-5 Front

- (2) 5pin DMX Input
- (10) 5pin Opto-Isolated DMX Outputs

Back

- Locking Power In

Physical

- Length: 482 mm (19 in.)
- Width: 155.9 mm (6.1 in.)
- Height: 44 mm (1.7 in.)
- Weight: 1.5 kg (3.31 lbs)

Electrical

- 100-240 V nominal, 50/60 Hz



DMX10-53

The NETRON DMX10-53 is a rackmount 10-port DMX Splitter with dual inputs and freely assignable 5 and 3pin XLR DMX outputs. Utilizing long life toggle switches every port is routed to either the A or B input, providing flexibility to accommodate any situation. The DMX10 is made from a rugged metal chassis featuring impact resistant paint and a lightweight yet solid construction.

Key Features

- 5pin (A) and 3pin (B) XLR DMX Input
- (10) Isolated 5 and 3pin XLR DMX Outputs
- A/B routing per output port
- LED feedback for In/Out/A/B/Power
- Industrial strength powder-coated finish
- Lightweight and rugged rackmount housing

Mounting

- Rackmount

Connections

Front

- 5pin DMX Input (A)
- 3pin DMX Input (B)
- (5) 5pin Opto-Isolated DMX Outputs
- (5) 3pin Opto-Isolated DMX Outputs

Back

- Locking Power In

Physical

- Length: 482.5 mm (19 in.)
- Width: 155.9 mm (6.1 in.)
- Height: 44 mm (1.7 in.)
- Weight: 1.50 kg (3.31 lbs)

Electrical

- 100-240 V nominal, 50/60 Hz

FRONT



BACK



RP2

The NETRON RP2 is an intelligent 2-way DMX Power Relay that is an ideal tool to protect fixtures from damage, lower power consumption, and reducing the overall wear and tear of any lighting system. The device is configurable via the integrated OLED display and encoder with real time status and power consumption feedback.

Key Features

- Two independent DMX Relay Circuits
- RDM support
- High Current Dual Pole Relays
- Support for 208V and Delta Power Systems
- Voltage and Power Status and Logging on display or via RDM
- 24h / 7 Day Event Scheduler
- DMX Signal Sensing for automated relay control
- Auto Power Sequencing with adjustable time delay
- 1.3" OLED Display with rotary encoder
- Powder-coated compact metal housing
- Surface, Truss, DIN-Rail and Standalone mounting
- Indoor use only

Mounting

- Standalone Truss-mount (M10 + M12 mounting hole)
- Wall-mount horizontal or vertical (included)
- DIN Rail horizontal or vertical (included)

Connections

Front

- 5pin DMX/RDM In and Thru

Back

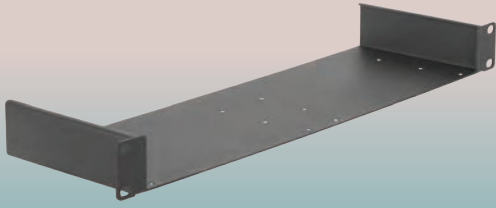
- (1) IP65 Locking Power In
- (2) IP65 Switched Locking Power Out

Physical

- Length: 173.5 mm (6.83 in.)
- Width: 132.6 mm (5.22 in.)
- Height: 50 mm (1.97 in.)
- Weight: 0.6 kg (1.32 lbs.)

Electrical

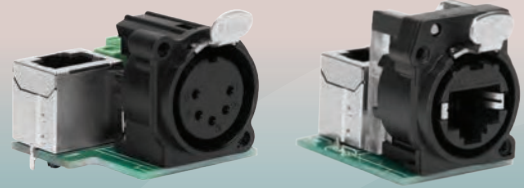
- 100-240 V nominal, 50/60 Hz 16A (EU), 16A (USA)



NETSHELF

The 19" NETRON rack shelf allows up to two NETRON products to be mounted.

It is provided with a blind plate for the install of a single product and includes all screws required for two devices.



PCB5P / PCBCAT6

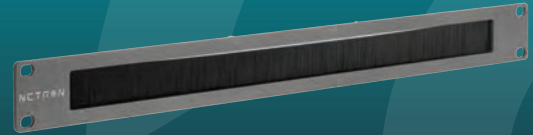
The NETRON PCB5P provides a standard D-Size DMX Output connector on a small PCB. 3pin Phoenix, 3pin IDC and RJ45 ESTA compliant DMX input are all provided to offer the most flexibility to system integrators.

The NETRON PCBCAT6 provides a standard D-Size locking CAT6A RJ45 Output connector on a small PCB.



NET PLATE

The Net Plate is a 19" 1U rack cover plate.



NET PLATE BRUSH

The Net Plate Brush is a 19" 1U rack cover plate with Nylon Brush cable passthrough.

ACCESSORIES



NETRON RJ-T

The NETRON RJ-T is a compact useful compact adapter to convert ESTA compliant RJ45 DMX ports to a 3-wire screw terminal. Ideal for installations of NETRON RJ45 products like the RDM645 or the EN12-45 it is also compatible with any other existing RJ45 DMX wiring infrastructure.



WP1DO



WP1DO-EU

The NETRON WP1DO provides a 5pin DMX Output connector in a Decora insert plate or a square cover plate, compatible with EU 50mm in-wall boxes.



WP1CAT6



WP1CAT6-EU

The NETRON WP1CAT6 provides a CAT6A compliant locking RJ45 connector in a Decora insert plate or a square cover plate, compatible with EU 50mm in-wall boxes.

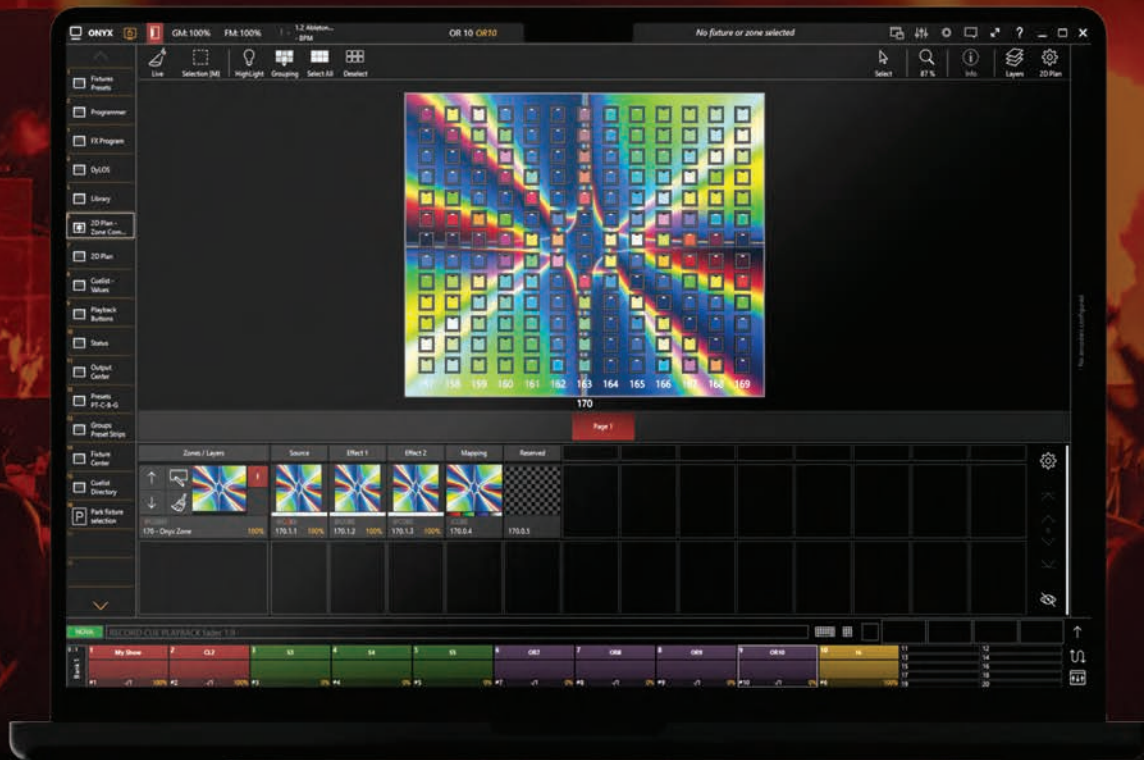


BS10



BS10-EU

The NETRON BS10 is an elegant wall station for cue or preset recall from the EN12i EtherDMX Node.



INTERNAL CUES + ONYX NOVA LICENSE

99 Internal Cues with Fade and Delay Time

The device supports up to 99 cues with fade, hold, and link options to loop multiple cues. Each cue stores a full snapshot of all DMX values across all ports, allowing compact “mini” cue lists. Cues can run standalone, act as signal-loss backups, or trigger from switch inputs—commonly for fire alarm overrides. They can also output as Ethernet universes, letting one device drive multiple NETRON nodes.

Unlocks ONYX NOVA 4 - Universe License

Although cues can be recorded with any lighting console, NETRON Gateway Ethernet Nodes unlock the ONYX NOVA license. The ONYX NOVA license features 4 Full Universes (2,048 parameters) then can be used to run live shows or used to program internal cues in NETRON Gateway Nodes.



UNLOCKS ONYX NOVA 4 UNIVERSE LICENSE

Obsidian Device	DMX Ports	EtherDMX Universes	ONYX PC Mode	RDM	MIDI, Timecode, OSC
NETRON Nodes	4-12	Universes 1-4	NOVA	Yes	No (5 min trial)



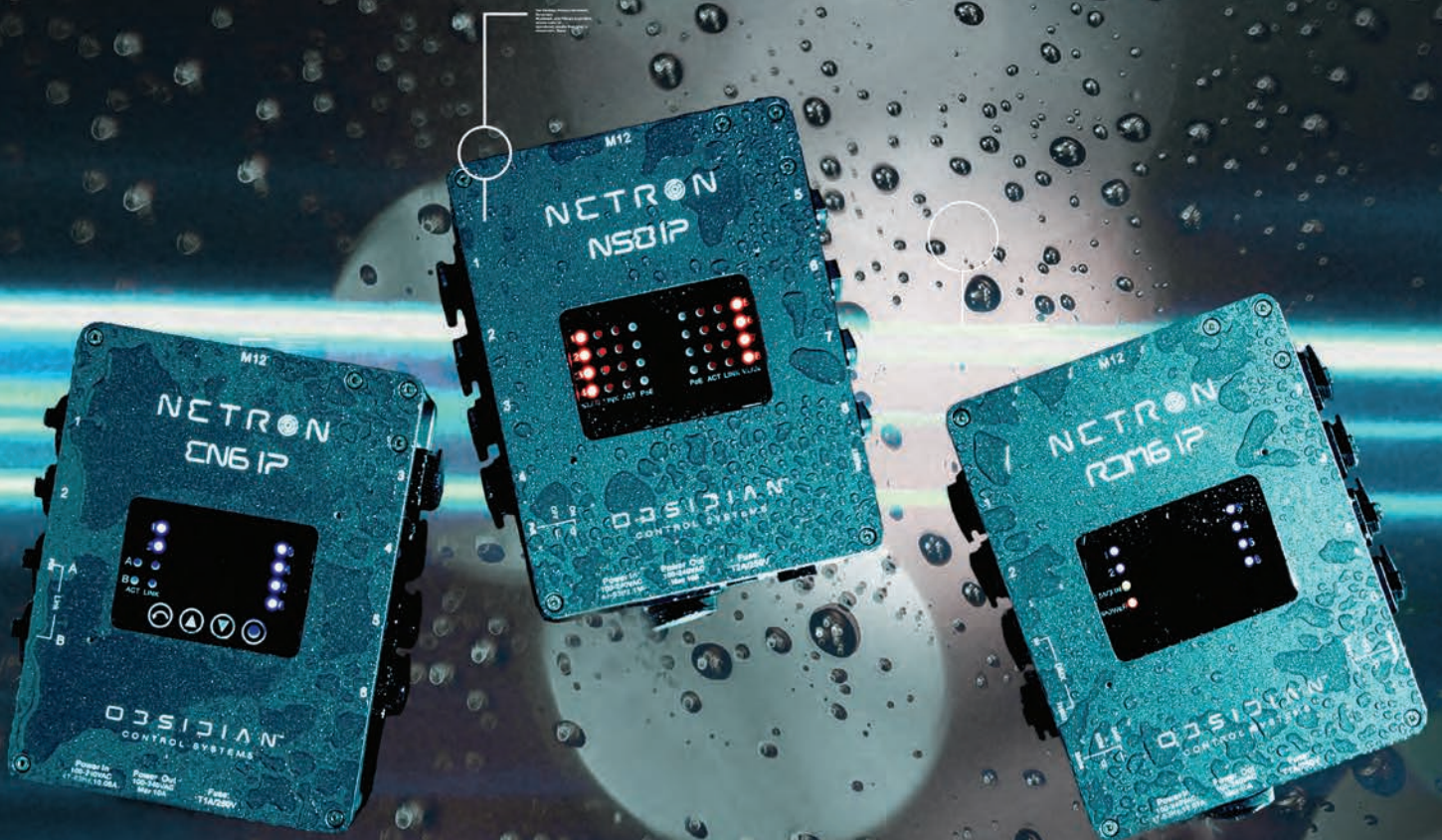


IP66 CHASSIS

EXPERIENCE
CUTTING-EDGE

{ CONTROL }

NETRON



OSSIDIAN

EN6D



DA2410V



NETRON

BS10



RDM6D





www.ObsidianControl.com

Specifications subject to change without notice. 01/2026

The information in this catalog has been carefully compiled, but errors or changes may still occur. Technical data, images, and specifications are provided for general information purposes only and may change without prior notice. We assume no liability for printing errors, inaccuracies, or subsequent updates to the specifications.