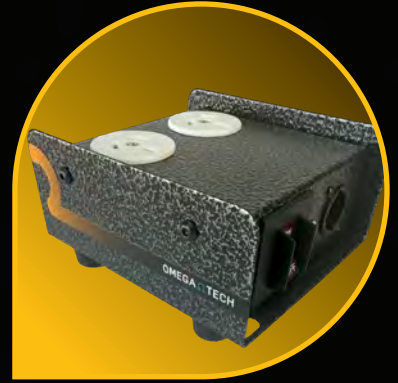
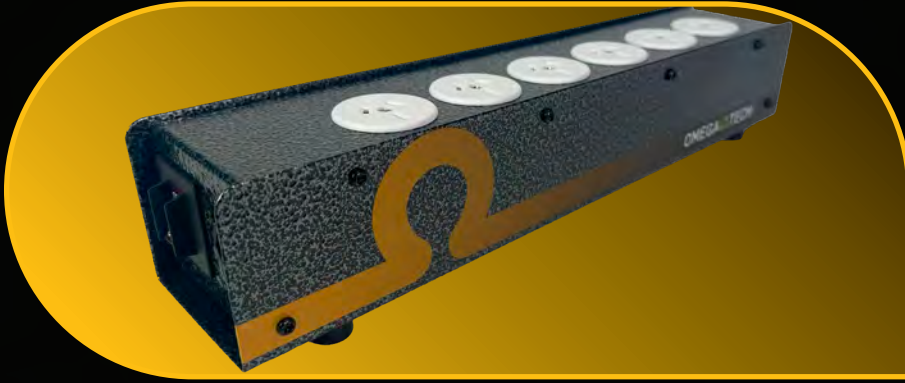


OMEGA Ω TECH



STAGE BOXES

DESCRIPTION

The OmegaTech Stage Box (SB) and Stage Box Strip (SBS) are new designs of the traditional audio stage box offering endless configuration options. Equally at home in fixed or mobile applications, the Stage Box Series can provide distribution for audio, power, or vision or combinations thereof, via almost any industry standard connector. Popular configurations are kept in stock. Custom configurations to suit individual requirements are available to order.



KEY FEATURES

Heavy duty steel construction

Unique textured hammer tone powder coat. Doesn't scratch like anodized aluminum
Can be custom ordered in a wide range of Dulux Powdercoat colours

Proven track record of being toured, kicked, dropped, abused...
Has even used as a wheel stop whilst jacking up a truck!

Integral M10 threads for hanging or attaching to stage legs — no adapters required

Non-slip rubber feet — assists in stacking and nesting

Easy to access earth bond points for PAT testing

All-bolt construction for easy service and maintenance — no rivets

MECHANICAL

The body is constructed of 1.2mm steel. Metal surfaces are zinc treated and finished in a signature hard wearing black powder coating. All products are available to order in the standard Dulux Powdercoat colour range. The product requires no external ventilation.

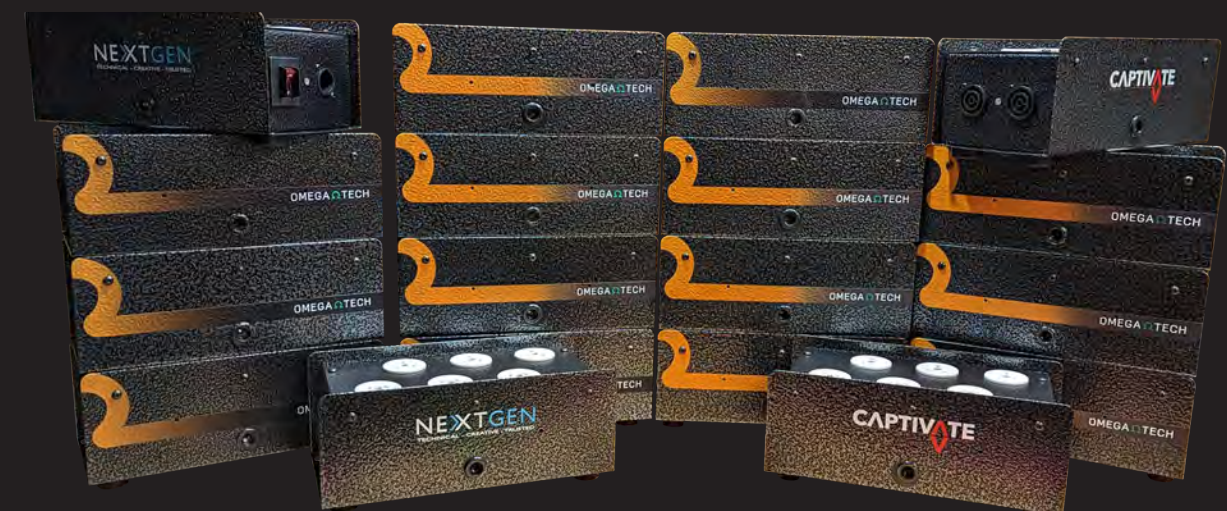
CIRCUIT BREAKERS

Where required, units are fitted with an integrated switched circuit breaker with red neon and finger guard provides overload protection. Unlike traditional thermal magnetic technology, OmegaTech has chosen to use Hydraulic Magnetic Circuit Breakers due to their constant performance in all temperature conditions. Traditional overload protection is affected by temperature, meaning on a hot stage deck, a breaker may trip at only half its rated capacity. Our Hydraulic Magnetic Breakers are guaranteed to trip at 100% of their rated capacity independent of temperature.

COMPLIANCE

All OmegaTech products are built to comply with Australian Regulations including:

- AS/NZS 3002:2008 — Electrical Installations — Shows and carnivals
- AS/NZS 3105:2007 — Approval and test specification — Electrical Portable Outlet Devices
- AS/NZS 4417:2017 — RCM/EESS Responsible Supplier in the Electrical Equipment Safety System
- AS/NZS 61439:2016 — Australian Standards for low-voltage switchgear and control gear assemblies



STAGE BOX STRIP

MODELS	
OTS-SBS-TG	Stage Box Strip; 10A; TrueCON Input & 4x 10A Outlets
OTS-SBS-TT	Stage Box Strip; 15A; TrueCON Input & 4x TrueCON Outlets
OTS-SBS-PG	Stage Box Strip; 10A; PowerCON Input & 4x 10A Outlets
OTS-SBS-PP	Stage Box Strip; 20A; PowerCON Input & 4x PowerCON Outlets



EXAMPLE SPECIFICATIONS	
MODEL	SBS-TG
SUPPLY VOLTAGE	240V 50Hz
SUPPLY CURRENT	10A
INPUT CONNECTOR	TrueCON
OUTPUT CONNECTORS	4 x 10A Australian GPO
TOTAL CIRCUITS	1
PHYSICAL	350mm x 65mm x 60mm 0.9kg

STAGE BOX STRIP LOOP THROUGH



EXAMPLE SPECIFICATIONS	
MODEL	SBS-TG-L
SUPPLY VOLTAGE	240V 50Hz
SUPPLY CURRENT	15A
INPUT CONNECTOR	TrueCON
OUTPUT CONNECTORS	6 x 15A Australian GPO 1 x Loop TrueCON (post circuit breaker)
TOTAL CIRCUITS	1
PHYSICAL	400mm x 80mm x 80mm 2kg

MODELS	
OTS-SBS-TG-L	Stage Box Strip; 15A; TrueCON Input / Loop & 6x 15A GPO Outlets
OTS-SBS-TT-L	Stage Box Strip; 15A; TrueCON Input / Loop & TrueCON Outlets
OTS-SBS-PG-L	Stage Box Strip; 15A; PowerCON Input / Loop & 6x 15A GPO Outlets
OTS-SBS-PP-L	Stage Box Strip; 20A; PowerCON Input / Loop & 6x PowerCON Outlets

STAGE BOX CLASSIC

MODELS	
OTS-SB-GPO-T	Stage Box; 15A; w/ TrueCON Input/Thru
OTS-SB-GPO-P	Stage Box; 15A; w/ PowerCON Input/Thru



EXAMPLE SPECIFICATIONS	
MODEL	SB-GPO-T
SUPPLY VOLTAGE	240V 50Hz
SUPPLY CURRENT	15A
INPUT CONNECTOR	TrueCON
OUTPUT CONNECTORS	2 x TrueCON 6 x 15A Australian GPO
TOTAL CIRCUITS	1
PHYSICAL	250mm x 125mm x100mm 2kg

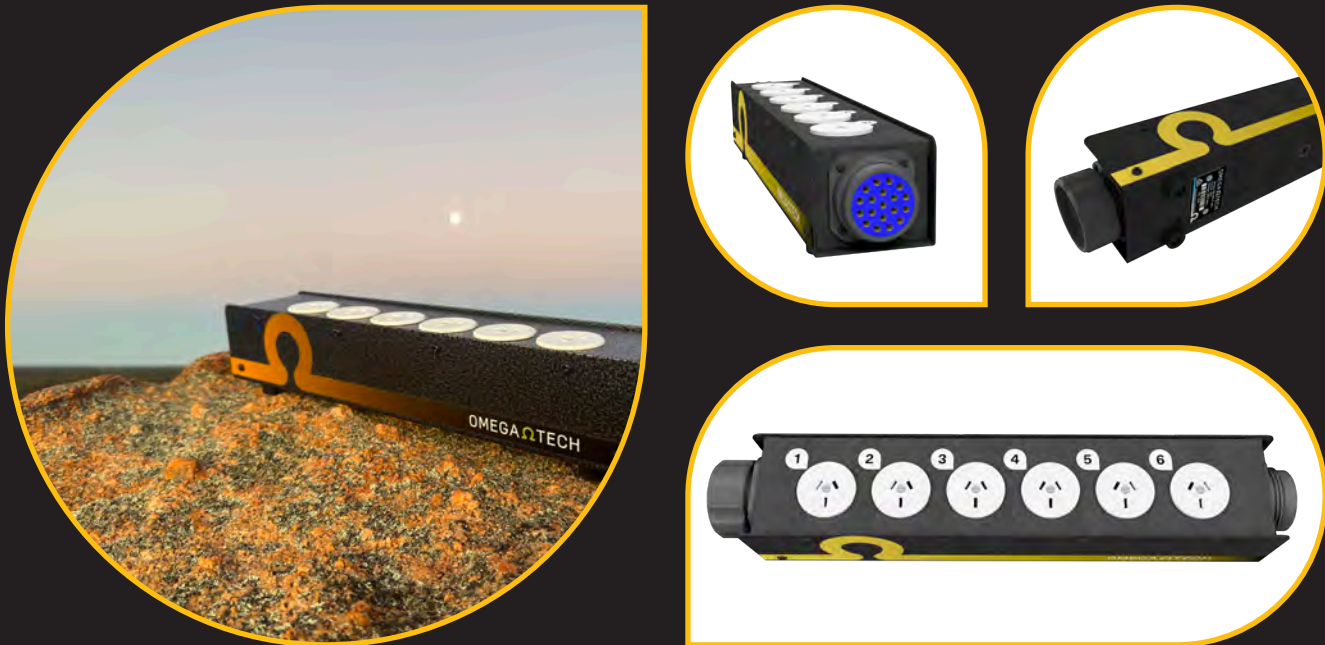
CEEFORM



EXAMPLE SPECIFICATIONS	
MODEL	OTS-SBS-T-P19L
SUPPLY VOLTAGE	240V 50Hz
SUPPLY CURRENT	15A
INPUT CONNECTOR	16A CeeForm (Black)
OUTPUT CONNECTOR	6 x 15A GPO Outlets
TOTAL CIRCUITS	1
PHYSICAL	400mm x 80mm x 80mm 2kg

MODELS	
OTS-SBS-G-P19	Stage Box Strip; 15A; CeeForm Input & 6 x 15A GPO Outlets
OTS-SBS-T-P19	Stage Box Strip; 15A; CeeForm Input & 6 x TrueCON Outlets
OTS-SBS-P-P19	Stage Box Strip; 15A; CeeForm Input & 6 x PowerCON Outlets

SOCAPEX STAGE BOX STRIPS



EXAMPLE SPECIFICATIONS	
MODEL	OTS-SBS-T-P19L
SUPPLY VOLTAGE	240V 50Hz
SUPPLY CURRENT	6 x 16A
INPUT CONNECTOR	1 x 19 pole Socapex
LOOP OUT CONNECTOR	1 x 19 pole Socapex
OUTPUT CONNECTOR	6 x TrueCON
TOTAL CIRCUITS	6
PHYSICAL	400mm x 80mm x 80mm 2kg

MODELS	
OTS-SBS-G-P19	Stage Box Strip; 6 x GPO; 19 pole Socapex Input
OTS-SBS-G-P19L	Stage Box Strip; 6 x GPO; 19 pole Socapex Input/Thru
OTS-SBS-T-P19	Stage Box Strip; 6 x TrueCON; 19 pole Socapex Input
OTS-SBS-T-P19L	Stage Box Strip; 6 x TrueCON; 19 pole Socapex Input/Thru
OTS-SBS-P-P19	Stage Box Strip; 6 x PowerCON; 19 pole Socapex Input
OTS-SBS-P-P19L	Stage Box Strip; 6 x PowerCON; 19 pole Socapex Input/Thru

WIELAND STAGE BOXES

MODELS	
OTS-SB-G-W10	Stage Box; 8 x 15A GPO; 10 pole Wieland Input
OTS-SB-G-W10L	Stage Box; 8 x 15A GPO; 10 pole Wieland Input/Thru
OTS-SB-TG-W10	Stage Box; 4 x 15A GPO & 4 x TrueCON; 10 pole Wieland Input
OTS-SB-TG-W10L	Stage Box; 4 x 15A GPO & 4 x TrueCON; 10 pole Wieland Input/Thru
OTS-SB-T-W10	Stage Box; 8 x TrueCON; 10 pole Wieland Input
OTS-SB-T-W10L	Stage Box; 8 x TrueCON; 10 pole Wieland Input/Thru
OTS-SB-PG-W10	Stage Box; 4 x 15A GPO & 4 x PowerCON; 10 pole Wieland Input
OTS-SB-PG-W10L	Stage Box; 4 x 15A GPO & 4 x PowerCON; 10 pole Wieland Input/Thru
OTS-SB-P-W10	Stage Box; 8 x PowerCON; 10 pole Wieland Input
OTS-SB-P-W10L	Stage Box; 8 x PowerCON; 10 pole Wieland Input/Thru
OTS-SB-PT-W10	Stage Box; 4 x PowerCON & 4 x TrueCON; 10 pole Wieland Input
OTS-SB-PT-W10L	Stage Box; 4 x PowerCON & 4 x TrueCON; 10 pole Wieland Input/Thru



EXAMPLE SPECIFICATIONS	
MODEL	OTS-SB-G-W10L
SUPPLY VOLTAGE	240V 50Hz
SUPPLY CURRENT	4 x 15A
INPUT CONNECTOR	1 x 10 pole Wieland/Harting
LOOP OUT CONNECTOR	1 x 10 pole Wieland/Harting
OUTPUT CONNECTOR	8 x Australian 15A GPO (paired)
TOTAL CIRCUITS	4
PHYSICAL	311mm x 125mm x100mm 2kg



“

We've had our Omega Tech Powered Stage Boxes for just over 18 months and we have them in packs of six with various PowerCON links. Being PowerCON, we don't get air gaps, and the link through is a great feature. Their construction is great! They get dropped quite a bit and apart from a few dents, they are fine. The M10 bolt holes on the back are really useful for hanging. I've seen the internals; everything is immaculately done. They are robust and do exactly what they say on the tin. We can't fault them.
— **Twisted Pair Productions, QLD**

The Omega Tech Stages Boxes are a simple but unique product that fills a hole in the market. The PowerCON connection cannot fall out... We like PowerCON cables because they are a locking connector. Very reliable! We'll be buying more! — **Totally Sound, WA**

Before coming across this range of products a couple of years ago, everything had to be custom-built, which is a challenge. Omega Tech's gear already complies with the relevant safety standards, and is built out of steel, which means it doesn't fall apart. When people see them, they often comment 'Oh wow, that is a great idea!' And they are; they really fill the need, the quality is good, they are fully-compliant, the price is fair, and their service has been fantastic. — **Brisbane Sound Group, QLD**

These things are built as strong as the brutal Australian Outback
— **Murray Edwards, ME Art (Photography Credit)**

”

ABOUT OMEGATECH

OmegaTech is a Western Australian privately owned company, specialising in the design and manufacture of equipment for the events industry. With over 20 years' of production experience, director Craig Beatson understands the importance of quality and reliability. OmegaTech specialises in custom solutions, providing unique products to an industry where one size seldom fits all. With an eye for precision and quality, OmegaTech prides itself on producing high quality products.

OMEGA  TECH

w | www.omegatech.com.au
p | 1800 066 342
e | sales@omegatech.com.au